




Segnalatori Luminosi ø 12 – 14

Serie 41



Serie 41

- Voltaggio: da 12V a 400V
- Temperatura ambiente: da T75 °C a T150 °C
- Dima: ø 12 mm
- Spessore del pannello: 0.8 - 2.0 mm
- Resistenza in parallelo: su richiesta
- Fermo antirotazione
- Sistemi di assemblaggio: clips in plastica
-   

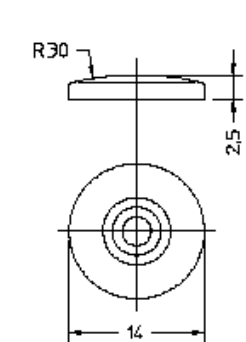
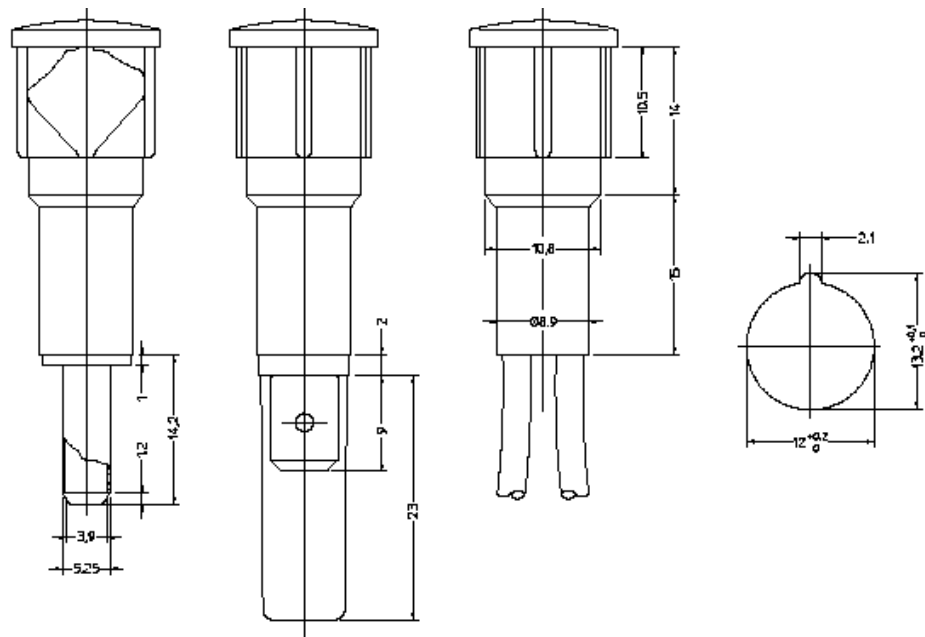
Caratteristiche

- Ghiera cromata disponibile su richiesta
- Disponibile su richiesta la versione LED

Terminali

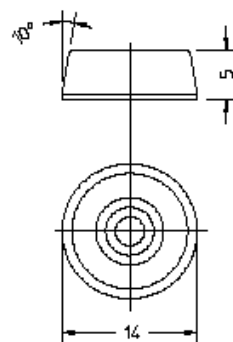


Dimensioni (mm)



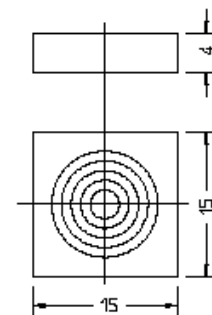
LOW PROFILE LENS

N° 41.2



HIGH PROFILE LENS

N° 41.1



SQUARE LENS

N° 41.4

Esempi di configurazione

